

This drawing should not be scaled. Dimensions to be verified on site. Any discrepancies should be referred to the Designer prior to work being started. This drawing is the property of Heartwood Garden Design and the drawing is issued on the condition that it is not copied, reproduced, retained or disclosed to any unauthorised person, either wholly or in part without the consent in writing of Judy Shardlow.

Product Notes

Composite Deck
Millboard Enhanced Grain in Golden Oak or Lined Oak with bullnosed edge detailed and fascia board for level changes.
www.millboard.co.uk

Resin Bound Gravel Path & Drive
Daltex UVR resin bound gravel in Cappuccino with Type 3 fully permeable sub-base for driveway and Type 1 sub-base for all pathway areas.
www.daltex.co.uk

Granite Setts
Cropped Setts Medium Grey Granite 100 x 100 x 50mm. Optional limestone setts to be discussed.
www.cedstone.co.uk

Tumbled Limestone Paving (Front Garden)
Egyptian Sinai Pearl Grey Limestone 900 x 600mm pavers with 40mm bullnosed step edges to house step.
www.arborlandscapesolutions.co.uk

Porcelain Paving (Back Garden)
London Stone 'Sidewalk' porcelain large format paving 1200 x 1200 x 20mm pavers.
www.londonstone.co.uk

Loose Gravel with stabilisation grid
CED quartz flint gravel 10mm with Eccogravel stabilisation sheets retained with granite setts or Everedge Pro steel edging in brown depending on location.
www.cedstone.co.uk

Steel Edging
Everedge Pro steel edging in brown
www.everedge.co.uk

Tensioned Steel Wires
S3I tensioned steel cable
www.s3i.co.uk

Semi Mature Trees
2 no. *Pyrus calleryana* 'Chanticleer' 18-20cm standard
1 no. *Acer palmatum* 'Bloodgood' multi-stem to 2.5m
www.majestictrees.co.uk

Close Board Fencing
Jacksons Fencing traditional featherboard fencing panels with capping.
www.jacksons-fencing.co.uk

Raised Beds and Triple Compost Bin
Harrod Horticultural raised beds to 200mm high 2400 x 1200mm and Triple Compost Bin.
www.harrodhorticultural.co.uk

Household Waste Bin
Rowlinson triple bin store
www.rowgar.co.uk

Garden Furniture
Kettler Cora dining table with armchairs and/or bench
Kettler Cora rope 3 seater garden sofa
www.kettler.co.uk

Water Feature
Foras Sea Salt water feature 900mm wide slate dish with stainless steel base set into Shark pebbles layer with circulating water reservoir and pump.
www.foras.co.uk

Freestanding Decorative Trellis
3 no. Screen with Envy L'Abre Corten Steel screens 900 x 1800mm screens secured with slimline steel posts to rear.
www.screenwithenvy.co.uk



Existing tree is retained and adjoining bamboo hedge is retained.

Lawn area is re-shaped and re-turfed. Lawn edges are defined with Everedge Pro steel edging in brown.

Existing Sorbus lutescens is re-shaped, thinned and slightly crown lifted if possible to reduce visual impact and maintain relative proportion to the space.

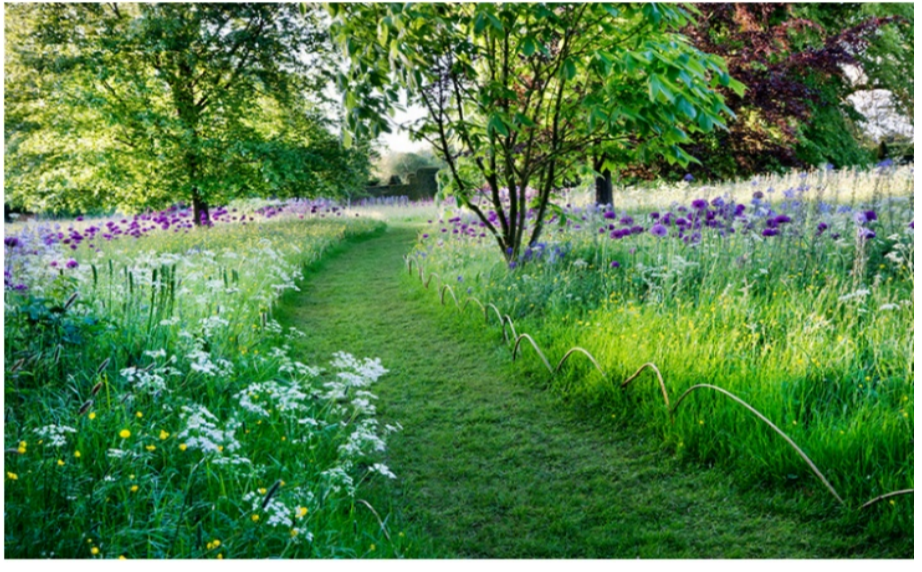
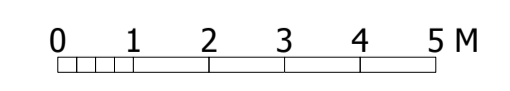
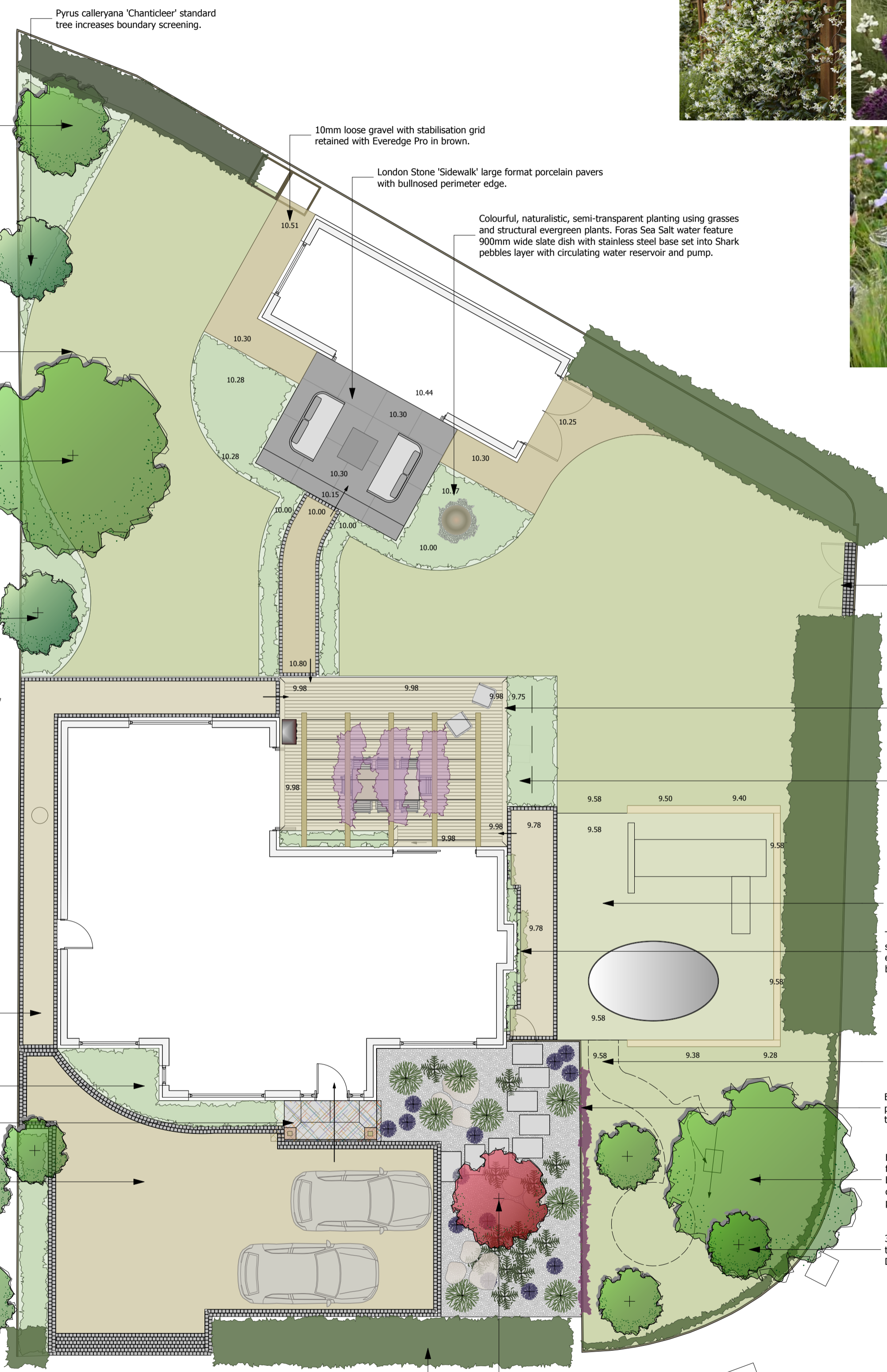
Existing Elder is removed and replaced with *Pyrus calleryana* 'Chanticleer' standard tree. Existing fencing panels are replaced with close board fencing to 2m to follow natural land rise. New fencing is wired with tensioned steel cables to allow for addition of climbing plants and vertically trained shrubs.

Daltex UVR resin bound gravel in Cappuccino with blue grey granite setts 100 x 100 x 50mm for a single sett perimeter to path.

Colourful planted low maintenance evergreen borders form attractive edge to the driveway.

Tumbled limestone pavers (blue/grey) with bullnosed edge to all visible faces form step platform. 40mm bullnosed edge with dripgroove.

Daltex UVR resin bound gravel in Cappuccino with blue grey granite setts 100 x 100 x 50mm form a double sett perimeter with 6 no. rows of setts to form a cross-over. NB 200 x 100 x 50mm form a double sett perimeter with 6 no. rows of setts to form a cross-over if preferred.



10mm loose gravel with stabilisation grid retained with Everedge Pro in brown.

London Stone 'Sidewalk' large format porcelain pavers with bullnosed perimeter edge.

Colourful, naturalistic, semi-transparent planting using grasses and structural evergreen plants. Foras Sea Salt water feature 900mm wide slate dish with stainless steel base set into Shark pebbles layer with circulating water reservoir and pump.

Granite setts 100 x 100 x 50mm crossover to footway.

Millboard Enhanced Grain Composite Deck in Golden Oak or Lined Oak with Oak arches connecting to the house using bespoke joist hangers. Tensioned steel wires provide support between arches for *Wisteria sinensis*. Tensioned steel wires to house walls provide support for evergreen *Trachelospermum jasminoides* to screen down pipes and waste pipes.

Planted border with 3 no. Screen with Envy L'Abre Corten Steel screens 900 x 1800mm screens secured with slimline steel posts to rear. Planting to this area to be higher, naturalistic and semi-transparent to provide separation from outdoor dining area and childrens play area.

Area of level astroturf retained with 200mm high tanalised timber sleepers to allow easy access to play equipment throughout winter months.

Tensioned steel wires to the side gable walls and chimney provide support for evergreen *Trachelospermum jasminoides* planted on each side of the chimney breast, ultimately covering all of side gable brickwork with scented evergreen climbing plant.

Mown path through orchard/meadow longer grass in the summer months leading to a circular play and picnic area and to a living willow dome.

Existing fencing panels are retained and ivy is removed. Panels are painted with Protek 'Dark Oak' with tensioned steel supporting wires to support a *Rosa 'vellichenblau'*.

Existing Hazel is thinned and crown lifted to create a more attractive feature tree. Existing *Thuja plicata* hedge is removed and close board fencing to 2m replaces. Space for a Harrod Horticultural (or other) triple composting bin. Hardwood chips over textile membrane provide a low maintenance weed free surface.

3 no. dwarf apple trees create small orchard area. Longer grass in the summer months with spot planted *Leucanthemum* (Ox Eye Daisies) and *Camassia* bulbs in spring.

Semi-mature multi-stem *Acer palmatum* 'Bloodgood' forms a focal point within a wider area of pebble garden planting with gravel, pebbles, cobbles and glistical boulders and a mix of low maintenance evergreen and perennial plants to provide easy year round interest. Tumbled limestone (blue/grey) pavers 900 x 600mm provide stepping stones set into pebbles for access to the rear garden.

Existing Beech hedge is retained and others front garden shrubs are removed or relocated into new border areas.

Title	
Project	
Client	
Paper size & scale	Date
1:100 @ A1	29/07/2022
Designed	Drawn
JS	JS
Drawing number	



28 Dale Ave
Wheatthampstead
St Albans
Hertfordshire
AL4 8LS
E-Mail: info@heartwoodgardendesign.co.uk
Tel: 01438 833858
Mobile: 07977 246748
www.heartwoodgardendesign.co.uk